



2019 Winter Media Guide

NEVER MISS A MOMENT



Contents

2	MEDIA CONTACTS, VISITS & RESOURCES
3	WHAT'S NEW IN 2019
5	STORY STARTERS
7	BULLER AT A GLANCE
8	VILLAGE IN THE SNOW
9	TICKET TO RIDE
10	SKI & SNOWBOARD SCHOOL
11	SO MUCH TO DO
12	SEASON CALENDAR
13	GETTING HERE
14	RESORT ENTRY, PARKING & TAXIS
15	BULLER AT YOUR FINGERTIPS
16	ENVIRONMENTAL VALUES
17	SUMMER
18	MT STIRLING
19	CHOOSE YOUR OWN ADVENTURE
20	WHAT'S NEW AT MT STIRLING
21	STIRLING AT A GLANCE
22	STORY STARTERS AT MT STIRLING



Media contacts & resources

You're here for the low-down. You're on deadline – we get it. So we've gathered the topline on what's new this winter and the key stats that make you sound like you know your stuff.



WELCOME

We've sprinkled in a few helpful tips on lessons and logistics, so your story is half-written and it sounds like you've lived here all your life.

Dive in. If you can't find what you need just give Rhylla a call or drop her an email:

rhylla.morgan@skibuller.com.au

If you are in the neighbourhood, she looks like this and prefers a flat white coffee with soy milk. (Who knows how they actually milk those little beans?)



COME AND SEE IT YOURSELF

We welcome visits from bonafide media, journalists, photographers, film crews and influencers each winter to support published stories, images and content.

We can help with resort access, time on the slopes and even a tasty lunch if you're coming for the day, or we have a limited number of places available for longer stays. We love this place and we love sharing it with others. Come and ski it and see it for yourself.

RHYLLA MORGAN

Buller Ski Lifts

T: 03 5777 7513

M: 0408 555 066

E: rhylla.morgan@skibuller.com.au

IMAGES & VISION

We can help bring your stories to life with professionally shot photos and video. To access the image gallery head [here](#).

The username is **mediagallery@skibuller.com.au** and the password to access the collection is **Buller31**.

Please read and follow the conditions of use before downloading.



What's new in 2019



*It's a massive year of exciting changes,
another new chairlift and even more snow!*



RIDE THE NEW EXPRESS

Mt Buller leads the way with a new \$6m chairlift this winter! The gleaming 6-seater Bourke Street Express will whisk you up Bourke Street in just over 2 minutes.

The new lift has fewer towers than the old Blue Bullet, which frees up even more ski area for smooth sweeping turns down to the village centre.

JUST PARK & RIDE

A great new service rolls out for peak weekends in July and August this winter. Day visitors save money and skip the worry of wheel chains and driving in the snow by parking at Mirimbah and taking the free luxury coach up to the village. It's a serious saving at just \$36.80 per car when you [book online](#) ahead of time.

NEW HOO HAH!

The Mt Buller Village has been buzzing with construction this summer. The famous grey pub, rumoured to have been held up by layers of paint and zip ties, has made way for a stylish version including a new retail and rental precinct.

The legend of the well-loved Kooroora lives on in this new venue that celebrates the rich history of the legendary "Hoo Hah" but will smell a lot better!

A downstairs nightclub is the place to party until "That's Amore" plays at 3am. Some traditions will never die!

70 YEARS OF LIFTS

Mt Buller celebrates 70 years of lifted skiing this winter! We've come a long way from the Ski Club of Victoria and BMW Ski Club's lone, homemade tow in 1949 to Victoria's largest network.

MORE SNOW, MORE FUN

Buller's famous 'snow guarantee' goes up another notch in 2019! A new 'mini' SnowFactory will top up the cover in the snowplay parks and the learner areas at the Ski & Snowboard School. Book with the confidence of more snowballs, plumper snowmen and more beginner turns. This new SF100 SnowFactory is mobile making snow where it's needed, adding to the already massive snowmaking system including the SF220 and 256 snowguns across the resort. Men's Downhill now comes with added snow. New snowguns will load up this superb, steep southside run this winter.

BIGGER AND BETTER

We have re-graded the Village Snowplay Park to create three new runs of varying lengths and fun for all ages! Just a stones throw from the Village Square, hire a toboggan from one of our many outlets and give it a go.



What's new in 2019



UPGRADE TO CANYONS ROPE TOWS

Try a comfy ride on the new platter lift that replaces the old Canyon Rope Tow this winter! It's a bit of a secret spot on the Canyons and this new lift will make the link from Chamois to Standard so much smoother. The new lift has the option to put the platter between your legs, as a side handle or up against your back as it pulls you along.

NIGHT LIGHTS ON CHAMOIS

Brilliant stadium-quality lighting will turn night to day on Chamois this winter allowing our freestyle and aerial Olympians to train day and night.

Mt Buller will host thrilling night-time expression sessions by the Team Buller Riders and the first Interschools' night events!

BULLER SPORTS CENTRAL MAKEOVER

Buller Sports Central has a fresh look for 2019, tonnes of new ski and snowboard rental stock and 300 new electronic lockers for stashing your snacks, spare socks or that extra layer. Just steps from Bourke Street they've got you covered with everything from lift passes to lip balm and the latest gear. Next door at Altitude the legendary tuning crew get your skis and boards race-ready with a new Montana Crystal Magic machine.

CARPOOL WITH FRIENDS

With upgrades to the car park facilities along Corn Hill Rd, we've created a little extra wiggle room. Whether you're up for the day or staying overnight, grab your friends, fill the car and head on up for that much needed getaway. Book online ahead of time to save on resort entry and car parking.

HARRO'S PHOTO GALLERY

Drop into Harro's [gallery](#) in the new Kooroora development in the Village and browse the stunning collection of fine art photos from Mt Buller and around the world. Take home a special piece for your wall or a unique gift for the mountain lover in your life. Book a professional shoot and Harro will get you a shot worthy of a magazine cover!

MORE WATER

Mt Buller will double its snowmaking water capacity with construction of a 100 megalitre dam planned in October 2019. This \$10m investment promises more water for the village supply and snowmaking and paves the way for future snowmaking expansion. Wood Run, Grimus and Standard Run are next in line to get a snowmaking boost.

Story starters

WRITING A STORY ABOUT TAKING KIDS TO THE SNOW, FAMILY FUN IN THE HOLIDAYS
OR HOW TO MAKE A WINTER ESCAPE AFFORDABLE WITH A FAMILY?



*Here are some
Buller bullet points to
get you started...*



UNDER 5 - SKI FREE

Kids up to 5 years old ride the lifts for FREE. They just need a B-TAG. PS: Over 70s enjoy the same deal!

KIDS STAY FREE

In June and September a number of on-mountain accommodation houses put the kids up for FREE when staying with two paying adults.

KIDS ARE BIGGER

Just because the kids get bigger each year, doesn't mean the price has to. Teenagers up to 18 in full-time secondary school ski at child prices.

KID'S WEEKS

In the Victorian school holidays we dial up the fun with a packed week of live entertainment, activities, competitions and fancy dress.

SNOWPLAY PARKS

It's FREE to slide and play in Mt Buller's two Snowplay Parks.

Perfect for families it's the safe place to take a toboggan ride and build a snowman - now with even more snowmaking this winter!

BULLER KIDS CENTRE AND MAGIC FOREST

The trained professionals in the Buller Kids' Centre care for snow bunnies as tiny as three months old in our cosy crèche. Children from just three years old get started on skis in the Magic Forest. Our qualified instructors make learning safe and fun.

AND SO MUCH MORE...

Explore the mountain and leave some time for extra activities like meeting fluffy sled dogs, hunting for gnomes around the village, bouncing in the AirZone, watching a movie at Australia's highest cinema or book in a family photo shoot with the pros!



More story starters

HUNTING OUT SMART ANGLES AND INSIDER TIPS TO SHARE?
HERE ARE A FEW HACKS TO SPRINKLE INTO YOUR PIECE...



GET ONLINE EARLY

Forget ringing around, searching dozens of sites or lining up in resort, the best prices are always online at mtbuller.com.au.

Save 10-20% off everything from lift passes to rental to accommodation and even resort entry and parking by doing it online before you visit. Just like locking in cheap flights it's all about getting in early and saving in off-peak times.

PARK & RIDE

Save money and skip driving up the snow road this winter with the new Park & Ride Snowplay Express service for day visitors on peak weekends in July and August. Simply park at the base of the mountain, no wheel chains, no worries. [Book online](#) for a 20% discount and for just \$36.80 per car you can kick back on the free shuttle up to the Village and leave the driving to us.

STAY IN THE SNOW

With over 8000 beds tucked high on the mountain Mt Buller puts you right in the snow so you can experience everything from first tracks to last drinks and make more of your winter escape while others are stuck in the car.

SPLURGE SMART

Some things are worth spending some snow dollars on. A private lesson might feel like a splurge but can make a massive difference to your time on the slopes. Split a lesson with a friend, enjoy VIP access on lifts and leave a better skier or boarder.

"THAT'S AMORE" THE NEW WAY

The infamous Kooroora Hotel has been home to the party at Mt Buller since the 50s. The dance floor pumps until 3am when "That's Amore" marks the end of the night. This year the cool crowd will christen a stylish 'new' Kooroora that sits on the site of the old pub. Same location, cleaner floor and just as much fun as always. Come and be part of writing the Hoo Hah's latest chapter!

Buller at a glance



LOCATION AND ACCESS

- Easy three-hour drive from Melbourne (248km north-east of the city)
- Closest major alpine resort to any international airport



A TRUE ALPINE VILLAGE

- True ski-in, ski-out alpine village with the most on-mountain beds in Australia - 8,000+ beds
- Wide range of accommodation types from hostels and lodges to luxury hotels and private chalets
- Over 40 cafes, bars and restaurants ranging from easy take-away to fine dining
- 11 specialty retail stores including equipment rental outlets, fashion boutiques and souvenirs
- 180 seat cinema - the highest movie theatre in Australia
- World-class ski and snowboard school, with 250 certified instructors
- Buller Kids Centre, catering for children from just 3 months old
- Day spa, sled dog tours, snowshoe tours, Buller Air Zone and more



ELEVATION AND SNOWFALL

- Summit altitude – 1805m
- Village altitude – 1600m
- Highest lifted point – 1780m Grimus chairlift
- Base altitude – 1375m Chalet Creek load station
- Snowline – 1200m
- Lifted vertical drop – 400m
- Average cumulative snowfall – 2.42m
- Average snow depth – 1.1m



TERRAIN

- Over 300 hectares of skiable terrain
- Terrain mix:
 - 20% beginner
 - 45% intermediate
 - 35% advanced
- Longest run – Little Buller Spur 2.5km
- Three Terrain Parks



LIFTS

- Victoria's largest lifting system with a network of 22 lifts
- Capacity to move 40,000 skiers per hour
- Two high-speed six seaters (Mercedes-Benz and Bourke Street Express)
- One detachable quad chair (Northside Express)
- Seven quad chairs (Fox, Wombat, Summit, Howqua, Southside, Bull Run and Bonza)
- Two triple chairs (Grimus, Federation)
- One double chair (Lydia's)
- Four T-bars (Koflers, Skyline, Boggy Creek, Tirol)
- One rope tow (Canyons)
- Four carpet lifts (Bourke Street, Cattleman's Carpets, Happy Feet and Gliders)



SNOWMAKING AND GROOMING

- The new computerised SnowSat system allows groomers to precisely manage snow depth and smoothly groom the snow across the runs for better cover.
- The SF 220 Snowfactory can produce up to 220 cubic metres of snow daily at temps up to 15°C
- The NEW SF 100 Snowfactory is a smaller mobile snowfactory adding to cover in the beginner areas and snowplay parks
- 256 snowmaking guns across the resort capable of pumping 400+ litres of water per second
- Snowmaking boosts cover on more than 78 hectares and 19kms of trails
- Fleet of 12 grooming machines including two specialised terrain park groomers, two winch cats, two dedicated toboggan park groomers and a cross-country track setter



Village in the snow

DISCOVER CAFES, SHOPS, VIEWS ON ALL SIDES AND EXPERIENCE THE MAGIC OF PLAYING AND STAYING IN A LIVELY COMMUNITY PERCHED HIGH IN THE SNOWLINE.



ACCOMMODATION

Mt Buller offers the most on-mountain beds of any ski resort in Australia (over 8,000), from simple hostel-style accommodation and friendly ski club lodges to full-service hotels and luxurious apartments. Whatever your budget or style you will find something that puts you close to the action.

Booking a snow holiday is easy at Mt Buller with an online 'one-stop' reservation service that brings a whole holiday together. A complete winter escape can be booked in one transaction at mtbuller.com.au.

Bundle accommodation, parking, transfers, lift passes, lessons and even add in rental and activities so it's all done before you arrive.

NEED SOME ADVICE?

Call 1800 BULLER or email reservations@bullerholidays.com.au and real people who know Mt Buller are there to help.

FEELING PECKISH?

After working up an appetite on the slopes, slide into one of Mt Buller's many cafés, bars or restaurants to put something warming in your tummy. Take your pick from over 40 venues on the hill, from fast food to cosy bistros and fine dining. And yes, there is schnitzel! Explore the options [here](#).

SHOP SLOPE-SIDE

Indulge in some retail therapy or get the essentials from one of 11 retail and rental stores on the mountain. Rent some gear, buy the latest European styles, replace your old gloves, stock up on groceries or invest in a piece of local artwork. It's all [here](#).

RESORT MAPS

Getting around the resort is easy on foot or by hopping on a free shuttle bus. View or download maps [here](#).



Ticket to ride

BUYING EARLY AND ONLINE IS THE SMART WAY TO RIDE FOR LESS AT MT BULLER



CHOOSE A PASS, CHOOSE A PRICE

The old days of asking “What is the price of a day pass?” are gone, and now it is “how can I get the best deal?” Smart skiers buy early and [online](#) to get the best price and adjust their visit to get more snow for their dough.

At Mt Buller prices for an adult pass start from just \$66 (plus a B-TAG) and \$37 for a child.

You will always get the best price online when purchased in advance.

Children under five and seniors over 70 ski FREE (with a \$5 B-TAG).

Guests seek out the cheapest days to hit the slopes at [mtbuller.com.au](#) and lock in their pass price before they visit. Passes are available online from March with the best deals mid-week and during June and September.



BUY EARLY

Passes are cheaper in advance

BUY ONLINE

You will pay less online than in resort

SEASON MEMBERSHIP

Enjoy unlimited days all winter and membership discounts.

NEW IN 2019 – enjoy Mountain Collective benefit of 50% off day passes at member destinations.

SPECIAL PASSES

6 Day Any Day and other promotional passes are a great way to save

OFF-PEAK

It's always a better deal outside weekends and peak periods

RELOAD

B-TAGs are reusable so reload online and get straight on the slopes



Ski & Snowboard School

NOT JUST FOR KIDS - LESSONS ARE A GREAT WAY TO DISCOVER NEW TERRAIN,
ENJOY LIFT PRIORITY AND GET TIPS FROM THE PROS!



If you are a cautious first-timer or even if you've been carving it up for years there is a lesson that will make your time on the slopes better.

BEGINNER TWILIGHT LESSONS

A great way to squeeze in a late afternoon Discover lesson, these classes run on mid-winter weekends (6 July to 24 August) at 3.30pm and private beginner lessons are offered on request.

PRIVATE LESSONS

One-on-one instruction is a sure-fire way to take your skiing or snowboarding to another level. Bookings are essential. Ski with a friend or off-peak to save. Book as much time as you need, from one hour or a whole day.

FREE 2-HOUR DISCOVER LESSON

Mt Buller's Discover pass gives new skiers and boarders access to beginner lifts and includes a two hour lesson to get started safely with the basics.

OFF-PEAK ADULT LESSONS

Afternoon lessons are slightly cheaper than morning lessons - so you save and get a sleep in! Enjoy a 2-hour session at 1.30pm on uncrowded slopes while others break for lunch.

BULLER KIDS' CENTRE

Children as young as 3 years old get started skiing with qualified, patient instructors. Choose from morning, afternoon or full-day programs.

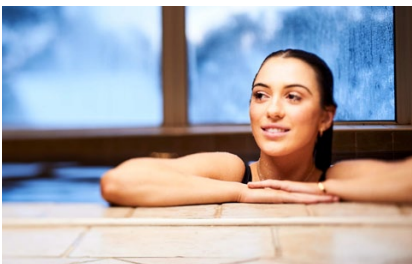
CRÈCHE

Little ones from 3 months to 3 years old are in safe hands in the Buller Kids' Centre overlooking the Magic Forest. The caring team of qualified child care professionals care for young ones so parents can get on the slopes or enjoy a coffee break. Find out about lessons at the [Ski & Snowboard School](#).



Activities – so much to do

YOU'LL BE AMAZED AT THE AMOUNT OF THINGS TO
PUT ON YOUR 'MUST DO' LIST UP HERE!



SKIING & SNOWBOARDING

Obviously! It's the main game and there is terrain for all levels – from gentle bunny slopes to steep and deep double blacks. And when the sun goes down the lights come on for weekend Twilight Sessions on Bourke Street in peak season.

TOBOGGANING & SNOWPLAY

Take a slide on one of two FREE snowplay slopes (complete with their own snowmaking), build a snowman or take a 'Snowplay in a Day' tour.

SNOWSHOEING

Explore beautiful trails around the mountain on snowshoes – hire snowshoes and choose your own adventure or take a guided tour.

SCENIC CHAIRLIFT RIDES

Rug up and ride the Northside Express chairlift to the Spurs cafe and scenic lookout for spectacular views. Perfect for non-skiers.

HARROART GALLERY & PHOTO SHOP

Browse fine art photography in Harro's gallery in the new Kooroora development and take home a piece of Mt Buller for your wall. Book Harro for your own shoot and capture a precious family memory or a thrilling action shot.

CINEMA

Our 180 seat movie cinema screens the latest blockbusters, regular kid's films and international film festivals.

SLED DOG TOURS

Get up close with the huskies (and a kelpie!) and take in the scenery on a traditional sled ride!

NATIONAL ALPINE MUSEUM

Celebrate 70 years of lifted skiing at Mt Buller and learn about our rich alpine history in a museum stuffed with memorabilia and stories!

DAY SPA

Soak, unwind and enjoy a treatment at Breathtaker Hotel's tranquil Alpine Spa Retreat after a day on the slopes.

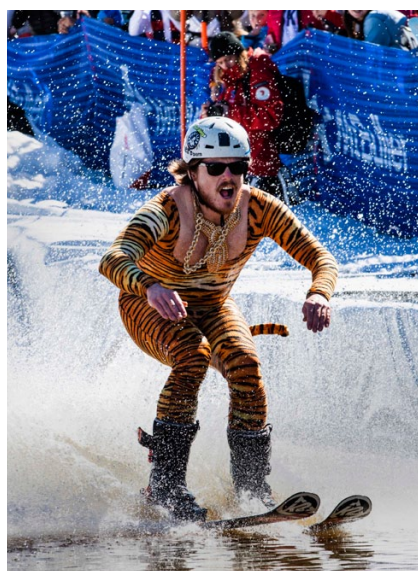
BULLER AIR ZONE

Buller's new trampoline, airbag challenge and climbing facility is a hit with kids, athletes and adults. Drop in for a bounce and you might rub shoulders with Olympians in training!



Season Calendar

Winter starts with a bang, and guaranteed snow from the June long weekend.



JUNE

- 8–10 Official Opening Weekend Celebrations
- 22 Banff Mountain Film Festival

JULY

- 1–5 Kids' Week
- 18 South Australian Schools Snowsports
- 20 Burton Cattleman's Rail Jam

AUGUST

- 3 Junior National Mogul Championships
- 4 Subaru Victorian Interschools XC Championships
- 10 Slopestyle
- 17 FreeBOM
- 19–25 Subaru Victorian Interschools Championships
- 31 ABOM Mogul Challenge

SEPTEMBER

- 4–8 Australian Interschools Snowsports Championships
- 14 Eighties Day
- 21–22 Yak Ales Pond Skim National Championships

[Click here to see the full season calendar](#)



Getting here

ENJOY A ROAD TRIP, TAKE A COACH TOUR OR PARK & RIDE
– JUST GET ON UP HERE!



FLY & DRIVE

Mt Buller is Australia's most accessible snow resort, an easy three hour drive from Melbourne Airport.

COACH

Sit back and let someone else do the driving with regular services from Melbourne and Mansfield.

NEW IN 2019 PARK & RIDE SNOWPLAY EXPRESS

Day visitors can save money and skip renting or fitting wheel chains by parking at Mirimbah and taking the new Park & Ride Snowplay Express shuttle up to the village on peak weekends in July and August. It's a serious saving at only \$36.80 per car when you [book online](#) before your visit.

WHEEL CHAINS

Day Visitors

Mt Buller provides a daily wheel chain declaration based on snow and road conditions. Visitors should check the website the night before. Click [here](#) for more information.

Overnight Visitors

Overnight visitors are required by law to carry wheel chains and fit them if directed.

SELF-DRIVE

Only 248kms north east of Melbourne (about 3 hours), Mt Buller is the most accessible snow resort in Australia and the closest resort to any international airport (Melbourne, Tullamarine).

Approx. driving time from capital cities:

- Melbourne 3 hours
- Canberra 6 hours
- Sydney 9 hours
- Adelaide 9.5 hours

There are several scenic routes leading to Mt Buller, with plenty of quaint country towns and beautiful High Country views along the way.

Mansfield, 45 minutes from Mt Buller, is the ideal pit-stop to get a coffee or snack, fuel up the car (alpine diesel available) and hire equipment or wheel chains. Click [here](#) for details.



Resort entry, parking & taxis

IT'S NOW EASIER THAN EVER TO PRE-PAY RESORT ENTRY AND PARKING –
THEN COME STRAIGHT ON UP!



All guests to Mt Buller and Mt Stirling pay a fee to enter and park in the resort. These funds support essential infrastructure and services including roads, waste collection and water treatment.

Save a hefty 20% simply by pre-booking resort entry and parking online prior to arrival. It's a smart and simple way to save and we'll reserve a parking space ready for your arrival!

MIDWEEK STAYS ARE EVEN CHEAPER

As well as the benefits of pre-booking online, savvy visitors staying midweek save on overnight parking. Sunday to Thursday parking is up to \$20 cheaper per night.

RESORT ENTRY

Day Visitors

Day visitors pay a resort entry and parking fee per vehicle. The Northside Express chairlift is the quickest way onto the snow once you reach the car parks or a FREE shuttle will drop you into the village. Remember to pre-pay resort entry [online](#) to save and skip any queues at the gate.

PARKING

Overnight Visitors

Overnight visitors pay resort entry and a per night fee for parking. Rates vary based on the day of arrival and length of stay. Visiting midweek (Sunday - Thursday), and buying online offers significant savings.

VALET TRANSFERS (TAXIS)

Overnight guests can transfer from the Mt Buller car parks to their Village accommodation in the comfort of a 4WD taxi. Bundle up the family and all your bags for a cosy ride to the door. [Book online](#) ahead of arrival to schedule your journey and enjoy significant savings.

NEW IN 2019 PARK & RIDE SNOWPLAY EXPRESS

Day visitors can save money and skip renting or fitting wheel chains by parking at Mirimbah and taking the new Park & Ride shuttle up to the village on peak weekends in July and August. It's a great saving at only \$36.80 per car when booked [online](#) ahead of time.



Buller at your fingertips

HERE ARE ALL THE LINKS AND APPS YOU NEED FOR THAT BIT
AT THE BOTTOM OF YOUR STORY...



SNOWCAMS

Don't take our word for it, see for yourself! Live webcams stream live views from around the resort and direct on the app.

Click [here](#) to view Snowcams



VIDEO SNOW REPORTS

These short informative clips are a great way to start the day with the latest snow and weather information fresh from the slopes.

Click [here](#) to view.



BULLER LIVE APP

Everything you need - all on your phone. With a few clicks, you can book your entire holiday from accommodation, resort entry and parking, lift tickets, lessons and more. Plus, check conditions, view maps and even track your runs and find friends!

It's all on the Mt Buller Live App



Facebook - facebook.com/MtBuller



Twitter- twitter.com/mtbuller



Instagram - instagram.com/mt_buller



Youtube - youtube.com/user/MtBullerAustralia



Environmental values

WE WORK TO PROTECT AND CONSERVE THE UNIQUE AND BEAUTIFUL ALPINE ENVIRONMENT AND WILDLIFE OF MT BULLER AND MT STIRLING.



LIVING BIN

[The Living Bin](#) program is a joint initiative between Mt Buller and Mt Stirling Resort Management, 4SITE Australia P/L and the North East Waste and Resource Recovery Group which began as a trial in 2010 (funded with the support of Sustainability Victoria) and now continues as part of our best practice waste management operations. It is a voluntary program encouraging stakeholders and visitors to separate their organic waste and help conserve the alpine environment.

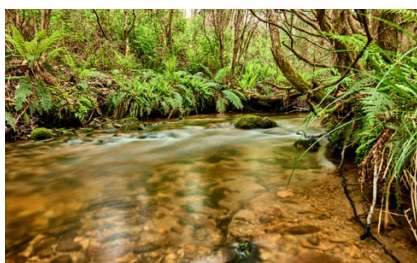
Since its inception, almost 100 properties participate in the program, that has seen over 337 tonnes of food waste diverted from landfill (that is a saving of over 641 tonnes of carbon emissions!). Save the snow, participate in The Living Bin Program.

MOUNTAIN PYGMY-POSSUMS

In one of Mt Buller's great environmental success stories, the population of the critically endangered Mountain Pygmy-possum has been brought back from the brink of extinction. The Mt Buller Mt Stirling Resort Management Board, with Buller Ski Lifts, has implemented a range of strategies to protect and enhance the population of these precious creatures.

Recovery activities include ongoing threat mitigation programs (pest animal and plant control), rehabilitation and revegetation of habitat, maintenance of genetic diversity via novel in situ translocation programs and continued education and awareness.

Summer



MUST DO MOUNTAIN BIKING

Cross-country

With over 120kms of international quality cross-country mountain bike trails between Mt Buller and Mt Stirling, we have trails for all levels of riders and abilities. Whether you're looking for a fun little loop around the Village with the kids or want to try something more challenging like the 50km Australian Alpine Epic, our trail network will get you hooked in no time.

Gravity

With five shuttle-assisted gravity options, these trails are not for the faint-hearted and will be sure to get the heart pumping! With a variety of challenging features including berms, rock gardens and road jumps, the trails will definitely keep you on your toes as you speed through the trees.

ROAD CYCLING

Feel the satisfaction of climbing 16kms and 921ms from the valley floor at Mirimbah, up the winding Mt Buller Tourist Road to the views from our alpine village. Take a selfie with our new sign in the Village to show off your time.

GET OUT YOUR DIARY

Throughout the summer season, help us celebrate everything Mt Buller and Mt Stirling have to offer from long-distance running races, mountain bike events, a food and wine festival and more! Head to mtbuller.com.au for the full event calendar.

EXPLORING THE TRAILS

Explore Mt Buller and Mt Stirling on your own two feet! Pick up a trail map or go for a wander through the Snow gums or Alpine ash forest. Experience breathtaking views from the summit as you take in 360 degree views of the resort.

ADVENTURE TIME

Just out of the resort in the beautiful High Country lies even more to explore! Take a trip to the iconic Craig's Hut via horseback or 4WD. Alternatively, pack your backpack and go for overnight hike - adventure is around every corner!

GNOME HUNT

Visit Mt Buller's cheeky year-round gnomes. Located throughout the Village, these gnomes can be found swinging in trees or lounging on top of bird boxes.

BOUNCING FUN

Buller Air Zone is open all year round and is the perfect activity for all ages. Master new tricks and flips on the Olympic size tramps ahead of the winter season, test out the giant inflatable air bag or scale the rock climbing wall to your heart's content.



Mt Stirling

MT STIRLING IS MT BULLER'S WILDER, MORE ADVENTUROUS SIBLING.



GETTING HERE

Easily accessible from Mansfield or Mt Buller, one entry fee covers entry to both Mt Buller and Mt Stirling resorts. Turn left after the resort entry gates and you will be whisked away through the wild rugged landscape up winding dirt roads for a true alpine experience.

WHEEL CHAINS

Day Visitors

Mt Stirling provides a daily wheel chain declaration for day visitors depending on snow and road conditions. Visitors should check the website the night before their visit. Click [here](#) for the latest information.

Overnight visitors

Overnight visitors are required by law to carry wheel chains.

PARKING FEES

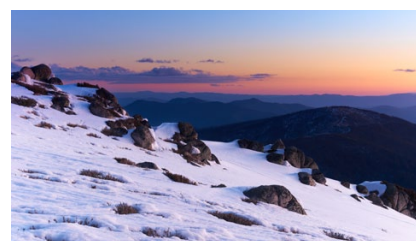
Entry & Parking	Online	On arrival
Car Entry (per vehicle)	\$46.40	\$58
Overnight parking first night	\$46.40	\$58
Overnight parking per additional weeknight (Sunday-Thursday inclusive)	\$8	\$10
Overnight parking per additional weekend night (Friday & Saturday)	\$28	\$35

Authentic Alpine Adventure

MT STIRLING IS A UNIQUE MOUNTAIN FULL OF LIFE AND ADVENTURE –
JUST THREE HOURS DRIVE FROM MELBOURNE,



As soon as you leave the bitumen road you are transported into a wild oasis of trickling streams and large native forests.



BACKCOUNTRY TERRAIN

Mt Stirling's best kept secret - backcountry bowls! Head out alpine touring and experience the untouched backcountry of Stanley Bowl. There you will find untouched snow, sensational views and if you're lucky fresh pow runs!

SNOW CAMPING

Love your summer camping trips? Why not try snow camping! With the Alpine Camp operated by Stirling Experience, you can camp in comfort on raised accommodation tents located on the local Mt Stirling 'cricket pitch'. A cosy teepee located in the centre provides that little extra warmth as you finish your day with a hot choccie.

CROSS-COUNTRY SKIING

There is something special about skiing through quiet Alpine ash trees as they tower above you, swaying slightly in the wind. With 68km's of maintained cross-country trails, there's plenty of room to explore. Lessons are available at the Mt Stirling Ski School.

SNOWPLAY

With a toboggan and snowplay park just steps from the Mt Stirling Cafe at Telephone Box Junction, it's the perfect introduction for families experiencing snow for the first time. There is something truly magical about making your first snow angel!

SNOWSHOEING

Snowshoes are a great way to explore Mt Stirling and the surrounds. Pick up a pair from Stirling Experience and go for a wander or join a guided snow-shoe tour through the Alpine ash forests.

MT STIRLING SKI SCHOOL

Stirling Experience runs the Mt Stirling Ski School, offering lessons for all levels and all disciplines, as well as equipment hire - grab your skis, toboggans, snowshoes and more in the one spot.

MT STIRLING CAFE

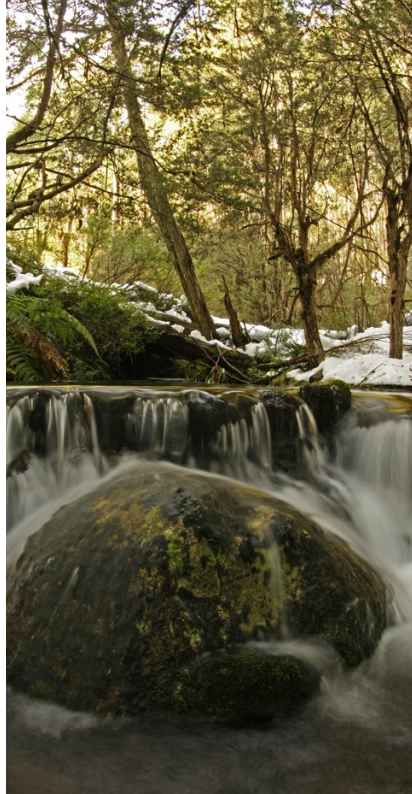
Stop by the cosy Mt Stirling Cafe to start or finish your adventure. With delicious local coffee, a menu full of homestyle delights and great trail advice, you might end up spending more time there than on the snow!

What's new at Mt Stirling in 2019

MT STIRLING JUST KEEPS GETTING BETTER EVERY YEAR!



With improvements around the resort to enhance the visitor experience, there is something for everyone at Mt Stirling.



DON'T WASTE MT STIRLING INITIATIVE

Have you spotted Larry the Lyrebird whilst visiting Telephone Box Junction at Mt Stirling? He is unique in that he is made entirely out of rubbish collected from the entry of Mt Stirling, made by students from Lauriston Girls' School (Howqua). The sculpture is part of a project to reduce litter by getting visitors to sort and remove their own waste. It builds on the ethic of 'carry in carry out' and 'leave no trace'. Overnight guests and groups are able to pick up their own portable waste kit from Stirling Ski Patrol at Telephone Box Junction.

MT STIRLING HYDRO

After more than a ten year absence (caused by the Great Alpine Fires of 2006–07), the micro-hydroelectric facility was re-installed at Mt Stirling to provide a renewable energy supply to the visitor facilities at Telephone Box Junction (TBJ). Now in its second year of operation, Mt Stirling and her visitors can breathe a sigh of relief and enjoy the peace and quiet and lack of fumes within the Resort not having to rely on a diesel-powered generator for its electricity needs. Thanks to a government environmental grant and hard work from the Resort Management Board, Mt Stirling is happily now cleaner and greener!

THE MOUNTAIN AT YOUR FINGERTIPS

New for 2019, our mobile-friendly website will make planning ahead and booking resort entry and parking even easier. [Book online](#) in advance to save big! View our daily trail and weather updates from Stirling Patrol and keep an eye on our live snow-cams for snow conditions.

Stirling at a glance



LOCATION AND ACCESS

- Scenic three hour drive from Melbourne (approx 230km north east of the city)
- Accessible via 2WD and 4WD (check for daily wheel chain requirements)



DATES

The Mt Stirling snow season officially opens on Saturday 8 June 2019 and runs to Sunday 29 September 2019. Snow levels vary throughout the season so it's best to refer to the [Mt Stirling website](#) for the daily trail reports and snow updates.

- Average days open – 107



TERRAIN

- Summit – 1749m
- Resort size – 3000ha
- Groomed trails suitable for cross-country skiing and snowshoeing
- Practice beginner slope for downhill skiing, telemarking and snowboarding
- Intermediate to advanced backcountry skiers, telemarkers and boarders will find a variety of off-piste terrain, including the infamous Stanley Bowl
- There are no chairlifts or tows at Mt Stirling – earn your turns!



ACCOMMODATION

- Snow camping is permitted
- Guests can spend a night under the stars at the [Alpine Camp with Stirling Experience](#)
- Other than snow camping and mountain huts, there is no other accommodation at Mt Stirling, however Mt Buller, Merrijig and Mansfield offer a wide range of accommodation options



FACILITIES AND SERVICES

- Ski patrol 7 days per week 8.30am–5pm
- Shuttle within the resort
- Education and interpretive activities

Telephone Box Junction

- Visitor lounge with cosy fireplace
- First Aid Centre and Ski Patrol Base
- Mt Stirling Café
- Ski school and equipment hire
- Public toilets
- Winter bus service
- Toboggan slope

Further afield

- Mountain huts for shelter and camping
- Shelters with fireplaces
- Alpine Snow Camp



AT YOUR FINGERTIPS

The Mt Stirling website and its new mobile friendly counterpart is the best spot for the latest snow conditions and happenings all season long. Resort snowcams provide daily live vision of the resort with trail conditions updated daily. If you want a behind the scenes look at the what goes on at Mt Stirling, check out our Mt Stirling Facebook and Instagram.



MEDIA CONTACT

We love to welcome bona fide journalists to Mt Stirling, for an authentic alpine adventure.

Rhylla Morgan

rhylla.morgan@skibuller.com.au

Story starters at Mt Stirling

WRITING A STORY AND NEED A FEW INSIDER TIPS AND LOCAL SECRETS?
WE'VE GOT YOU COVERED FROM THE BEST TRAILS FOR SNOWSHOE ADVENTURES
TO GETTING LESSONS WITH THE PROS.



EXPERIENCE FOREST BATHING

The Japanese have been onto the healing powers of 'shinrin-yoku' or 'forest bathing' for decades. Why not prescribe yourself some time out in nature and let the quiet majesty of our tall Alpine ash forests sooth your mind and soul?

ALPINE SNOW CAMP

Love going on camping trips in the summer and feeling a little more adventurous? Try Mt Stirling's only ski-in ski-out accommodation, the Alpine Camps located at the Cricket Pitch. The Alpine Camps operated by Stirling Experience allow you to camp in comfort at 1500 metres. With seven accommodation tents (each sleeping four people) surround a central teepee structure designed for dining and relaxing after a day's adventure with a nice pot belly stove.



WARM UP AT THE MT STIRLING CAFE

The Mt Stirling Cafe is the perfect one-stop cafe for all your food and coffee needs. Whether you are looking for hearty meal, a quick coffee or an afternoon delight. Sit by the wood fire and warm up as you meet the locals and catch up on the low down of everyone's adventures. A warning - you'll be tempted to hire a pair of snowshoes or cross-country skis and go for a wander yourself!

The staff are extremely friendly and will give you the best local trail advice and even the best selfie spots to make all your friends jealous!



LESSONS WITH AN 'ADOPTED' LOCAL

Winter after winter, our good friends from Estonia return for a season down under at Mt Stirling. The former World Champion ski instructors/guides have been welcomed into the community with open arms and know every turn and tree on the mountain - who else would you want by your side on our trails?

Head to the [Mt Stirling website](https://www.mtstirling.com.au) for more information.

BIG SHOES TO FILL...

One of the best ways to immerse yourself in the natural environment of Mt Stirling is to put on a pair of snowshoes and go for a wander. Explore Mt Stirling's two interpretive loops around the resort for an engaging and interactive experience as you learn about the local flora and fauna or about the Indigenous Taungurung Clans. Snowshoe up to the Stirling Summit for 360 views, and you may even be able to spot some skiers on Mt Buller.